

# Sweden-Korea Research Collaboration Conference

## 한-스웨덴 연구협력 컨퍼런스

Monday, 17 November 2025 at 13:00-16:30  
SK Future Hall, Korea University 고려대학교 SK 미래관



Join us for an exciting opportunity to explore the **powerful potential of Sweden-Korea collaboration!**

Held as part of **SKERIC Week 2025**, this special event brings together early-career researchers, academic leaders, and research-driven startups from both countries to foster partnerships and build lasting networks.

We warmly invite **faculty, researchers, PhD students, and all stakeholders** interested in connecting with SKERIC researchers and innovators, and engaging in interdisciplinary, cross-border cooperation.

**한-스웨덴 연구협력의 잠재력을 함께 탐색해 볼 수 있는 뜻깊은 자리에 여러분을 초대합니다!**

**SKERIC Week 2025** 의 일환으로 개최되는 이번 특별 행사는, 양국의 신진 연구자, 학계 리더, 연구 기반 스타트업들이 한자리에 모여 협력의 기회를 모색하고 지속적인 네트워크를 구축하는 자리입니다.

SKERIC 소속 연구자 및 혁신가들과의 교류와 학제 간·국제 협력에 관심 있는 **교수, 연구자, 학생, 관계자** 여러분 많은 참여를 기다립니다.

[This event is organized as part of SKERIC Week 2025. ]  
[ 본 행사는 SKERIC Week 2025 프로그램으로 개최됩니다. ]

SKERIC



## Who Should Join?

Researchers, faculty, students, innovation leaders, and anyone interested in Korea–Sweden R&D collaboration

## Why Attend?

- Connect with SKERIC researchers and innovators
- Discover inspiring Sweden–Korea collaboration stories
- Explore international funding and partnership opportunities
- Sharpen your skills through hands-on workshops and networking sessions

## Program Overview

Timeframe	Programme
13:00-13:30	<ul style="list-style-type: none"> <li>● <b>Welcome and introduction</b> 환영사 및 프로그램 소개</li> <li>● <b>Sweden-Korea Research Collaboration Stories of Impact</b> 한-스웨덴 연구협력 사례 발표</li> <li>● <b>Funding Opportunities</b> 한-스웨덴 연구협력 펀딩 소개</li> </ul>
13:30-14:30	<ul style="list-style-type: none"> <li>● <b>SKERIC Participant Poster Session (Meet &amp; Professional Networking)</b> SKERIC 참가자 포스터 세션/네트워킹</li> </ul>
14:30-16:30	<ul style="list-style-type: none"> <li>● <b>Design Thinking Workshop</b> 디자인 씽킹 워크숍</li> <li>● <b>Horizon Europe Workshop</b> 호라이즌 유럽 워크숍</li> </ul>

Closed sessions;  
RSVP required

## Inquiries

- **Event-related inquiries:** [kuircc@korea.ac.kr](mailto:kuircc@korea.ac.kr)
- **SKERIC project inquiries:** <https://skeric.org/contact>

**SKERIC (Sweden–Korea Education, Research, and Innovation Collaboration)** is a collaborative project between eight Swedish and Korean universities running until 2026. The project addresses some of the major challenges facing democratic societies today, with the aim to equip some of the best and brightest young researchers and innovators from Sweden and Korea with the necessary tools, skills, and networks to become academic leaders and outstanding researchers and innovators, capable of addressing the world’s most pressing challenges as well as advocating for democracy and academic freedom.



SKERIC



# Sweden-Korea Research Collaboration Stories of Impact

## 한-스웨덴 연구협력 사례 발표

**Date:** Monday, November 17, 2025

**Time:** 1:05 PM – 1:25 PM

**Venue:** Chey Jong-hyeon Hall, 1F, SK Future Hall, Korea University 고려대 SK 미래관 1층  
최종현 홀

This session spotlights real-world success stories from Sweden-Korea research collaborations that have made meaningful impact. Two featured speakers—one from each country—will share personal insights into collaborative projects that tackled global challenges, produced concrete outcomes, and delivered valuable lessons learned along the way.

By highlighting how transnational partnerships translate into innovation, policy change, or community benefit, this session aims to inspire new cross-border initiatives and strengthen ongoing ties among SKERIC institutions.

### **Speaker #1. Prof. Minsu Cho (POSTECH)**

Professor Minsu Cho is a Mu-Eun-Jae (無垠齋) Endowed Chair Professor and Associate Professor in Computer Science and Engineering and AI at POSTECH. An expert in computer vision and machine learning, his research focuses on critical areas including visual semantic correspondence, object discovery, and minimally-supervised learning.

Before POSTECH, he was a researcher at the Inria WILLOW team at ENS, Paris and completed his Ph.D. at Seoul National University (SNU). Prof. Cho was inducted into the Young Korean Academy of Science and Technology (Y-KAST) in 2020 and holds the prestigious Mu-Eun-Jae Endowed Chair at POSTECH. <https://cvlab.postech.ac.kr/~mcho/>

### **Speaker #2. Prof. Anne Håkansson (KTH Royal Institute of Technology & UiT The Arctic University of Norway)**

Professor Anne Håkansson is a Professor of Computer Science specializing in Intelligent Software Systems at KTH Royal Institute of Technology, Sweden, and a Full Professor of Artificial Intelligence at UiT the Arctic University of Norway. Her research focuses on AI-driven decision-making and reasoning, explanation using graphics visualisations and explainable AI, including pioneering work on intelligent software systems for early detection of colon cancer using deep learning.

Prof. Håkansson earned her Ph.D. and Docent (Associate Professor) at Uppsala University and brings over 30 years of experience in AI research and education. She also serves as Chair of Academic Affairs for the Knowledge-Based and Intelligent Information & Engineering Systems (KES) organization in the UK. <https://www.kth.se/profile/annehak/>

SKERIC



# Sweden-Korea Research Funding Opportunities 한-스웨덴 연구협력 펀딩 소개

**Date:** Monday, November 17, 2025

**Time:** 1:25 PM – 1:30 PM

**Venue:** Chey Jong-hyeon Hall, 1F, SK Future Hall, Korea University 고려대 SK 미래관 1 층  
최종현 홀

This brief spotlight session will introduce key funding opportunities available to support Sweden-Korea research collaboration. Highlights include SKERIC long-term mobility funding and internal funding schemes offered by Seoul National University (SNU), Korea University (KU), and POSTECH to encourage global partnerships.

SKERIC



# SKERIC Participant Poster Session (Meet & Professional Networking) SKERIC 참가자 포스터 세션/네트워킹

**Date:** Monday, November 17, 2025

**Time:** 1:30 PM – 2:30 PM

**Venue:** Lobby, 1F, SK Future Hall, Korea University 고려대 SK 미래관 1층 최종현 홀 앞

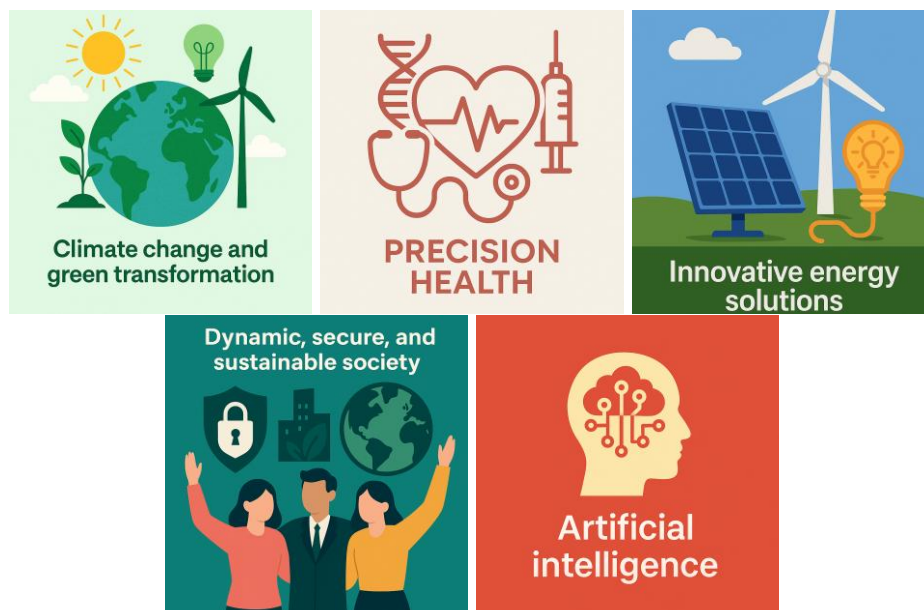
This interactive poster session is a key networking highlight of the day, offering SKERIC participants a chance to share ideas, showcase work, and connect across disciplines and institutions.

Researchers from SKERIC universities will present a poster—whether it features their current research, a collaborative project, or a new idea they'd like to explore. SKERIC's five thematic groups\* will also present group posters summarizing their thematic work.

\* *Climate change and green transformation / Precision health / Innovative energy solutions / Dynamic, secure, and sustainable society / Artificial intelligence*

Presenters will stand next to their posters during the full session to engage with fellow researchers, answer questions, and spark new collaborations in an informal “meet and mingle” atmosphere.

Whether you're presenting or just browsing, this session is an excellent opportunity to meet colleagues and future collaborators from across and beyond the SKERIC network.



SKERIC



# Workshops 워크숍

Please note that workshops are not open to the public. (RSVPs are mandatory.)

## Design Thinking Workshop 디자인 씽킹 워크숍

*Open to SKERIC participants only*

**Date:** Monday, November 17, 2025

**Time:** 2:30 PM – 4:30 PM

**Venue:** CJ Creator Library, Central Plaza, Korea University 고려대 중앙광장 지하 1층 CJ 크리에이터 라이브러리

**Target Audience:** Any level, any discipline

**Led by:** Professor Haerin Shin, Korea University

Prof. Haerin (Helen) Shin is an associate professor of Media & Communication, and the director of the International Research Collaboration Center at Korea University. Shin's research fields include Asian American literature, science fiction, and the ethics and aesthetics of artificial intelligence. She has written on cyberbullying, posthuman spirituality, techno-Orientalism, the ethics of artificial intelligence, and surveillance technologies, and is now working on a book on the representation of artificial intelligence in science fiction.

Design thinking is a human-centered, creative approach to solving complex problems. In this 2-hour hands-on workshop, participants will explore real-world challenges through the first three phases of design thinking: Empathize, Define, and Ideate.

Working in small interdisciplinary teams, you'll:

- Identify key problems within SKERIC themes (e.g., climate change, precision health, energy innovation, sustainable society, AI)
- Brainstorm innovative solutions
- Collaborate across institutions and disciplines
- Develop actionable ideas for future research or projects

Each team will create and present a project proposal that addresses global or local issues, while learning a creative process that emphasizes empathy, experimentation, and collaboration.

Ready to co-create the future? Join us and start designing meaningful change!

SKERIC



## **Horizon Europe Workshop 호라이즌 유럽 워크숍**

*Open to SKERIC participants and KU researchers only (RSVP mandatory)*

**Date:** Monday, November 17, 2025

**Time:** 2:30 PM – 4:30 PM

**Venue:** Chey Jong-hyeon Hall, 1F, SK Future Hall, Korea University 고려대 SK 미래관 1층  
최종현 홀

**Target Audience:** Senior researchers

**Led by:** Kerstin Gidlöf, Research funding advisor, Lund University

Dr. Kerstin Gidlöf (LU) has a background as a researcher in cognitive science. She has worked as a research funding advisor at Lund University since 2021 and also works as a grants manager at the Faculty of Law. Her work includes training and information efforts about Horizon Europe, analysis of applications and evaluations, personal advice in everything from research idea to application text, and support during the contract phase. Through her research background, Kerstin has extensive experience of both participating in and running research projects and has an established broad national and international network.

### **EU's Research & Innovation Programme, Horizon Europe (2021-2027)**

South Korea has officially become the first Asian country to be an associated country of Horizon Europe, the EU's largest multilateral research and innovation funding program. This association allows South Korean researchers to participate in Horizon Europe's Pillar II, focusing on global challenges and industrial competitiveness, on equal footing with EU researchers.

This two-hour workshop will introduce the program and guide you through practical steps for participation. Working through the key pillars and application process, you'll:

- Gain a detailed overview of the Horizon Europe program and its funding structure
- Learn how to write a competitive application for Pillar II collaborative projects
- Discover how to identify funding opportunities and build an ideal consortium
- Understand the evaluation process for proposals and the timeline for your application

Designed for senior researchers, the session will provide essential insights to expand your international collaborations and succeed in EU-funded projects.

**SKERIC**

